

## AEROLITE 4R REAR BRAKES

Complement your Aerolite 6R or SX6R front brake upgrade with a style- and performance-matched Aerolite 4R rear kit using the factory parking brake.

- Aerolite 4R four piston calipers
- Two-piece, 14.00" diameter rotors
- Full OE system compatibility

**GEN 5** '10-'15  
**GEN 6** '16-'19 SS



## SX6R FRONT BRAKES

Speed Xtreme SX6R calipers with large diameter iron or WCCB carbon-ceramic rotors provide the ultimate options for supercar-style big brake performance.

- Speed Xtreme SX6R six piston calipers
- Choice of 14.00" or 15.00" diameter rotors
- Dynamic mount, two-piece rotors

**GEN 5** '10-'15



## OE-FIT REPLACEMENT CALIPERS

Wilwood's OE-fit calipers add performance and style when using stock spindles and OE rotors, or upgrade conversion kits designed around these two popular caliper designs.

### D52 CALIPERS

- Rust-free, powder coat aluminum body
- Single or dual stainless steel pistons
- Low maintenance with huge weight savings
- Includes ProMatrix performance brake pads



**GEN 1** '67-'69

**GEN 2** '70-'81

**GEN 3** '82-'92

### D154 CALIPERS



## PERFORMANCE BRAKE PADS FOR OE CALIPERS

Get ultimate performance from your OE calipers with rotor and driver friendly ProMatrix pads for dual-sport street machines, or PolyMatrix and SmartPad compounds for race-only applications.

- Street- and track-proven compounds
- FMSI-specification OE dimensions
- Compatible with all iron alloy rotors

**GEN 1** '67-'69

**GEN 2** '70-'81

**GEN 3** '82-'92

**GEN 4** '93-'97

**GEN 5** '10-'15

**GEN 6** '16-'17

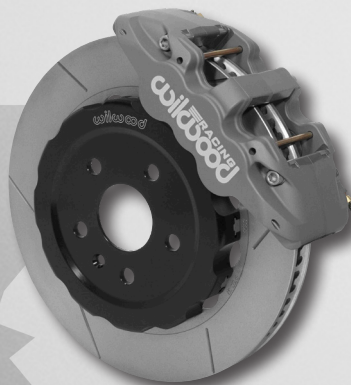


## AEROLITE 6R/ST ROAD RACE BRAKES

Aerolite 6R/ST road race kits deliver championship performance and unyielding durability in all levels of club and professional motorsports competition.

- Aerolite 6R/ST race calipers
- Thermlock® pistons with dampening springs
- Dynamic mount 14.00" diameter Spec37 GT rotors

**GEN 5** '10-'15



## D154 PRO-SERIES REAR BRAKES

D154 floating mount rear caliper kits provide an excellent option for autocross and track day cars to reduce pad knock-back when using OE rear axles.

- Forged D154 dual piston calipers
- 12.19" diameter rotors with internal parking brake
- Designed for 10/12 bolt c-clip rear axles

**GEN 1** '67-'69

**GEN 2** '70-'81



## SPECIAL APPLICATION BRAKES

Wilwood offers custom services covering options for anything from select powder coat colors to track-fortified kits for most years and models. Contact the Wilwood Technical Sales Support Team to discuss your particular needs.



**DISC BRAKES**  
**wilwood**

## CAMARO BUYERS GUIDE FOR STREET & TRACK

- Big Brake Upgrade Kits
- Drum-to-Disc Conversions
- Direct-Mount Calipers
- OE-Fit Pads

**GEN 1** 1967 - 1969

**GEN 2** 1970 - 1981

**GEN 3** 1982 - 1992

**GEN 4** 1993 - 2002

**GEN 5** 2010 - 2015

**GEN 6** 2016 - 2019

**DISC BRAKES**  
**wilwood**

## CAMARO PRODUCT GUIDE



4700 Calle Bolero  
Camarillo, CA 93012  
(805) 388-1188 | wilwood.com

Follow us on:



### DYNALITE CLASSIC SERIES FRONT BRAKES

Convert from drums to discs, or upgrade from OE discs with these complete and affordable front kits for custom and performance street machines.

- Red or black powder coat, or hard anodized Dynalite four piston calipers
- One-piece, 11.00" diameter integral hub and rotor
- Easy bolt-on installation to all OE spindles

**GEN 1** '67-'69



### DYNALITE FRONT BRAKES

High-performance braking with options for personal style in these conversion and upgrade front kits for the street, strip, and all types of show customs.

- Dynalite or DynaPro four piston calipers
- Options for 11.00" to 12.19" bolt-on rotors
- Weight-saving forged aluminum hubs

**GEN 1** '67-'69

**GEN 2** '70-'81

**GEN 3** '82-'92



### DYNAPRO 6A FRONT BRAKES

Get big brake stopping power and high-tech style to complement wheel, tire, and chassis upgrades on OE spindle custom and muscle street machines.

- DynaPro 6A forged six piston calipers
- Options for 12.19" smooth or drilled and slotted rotors
- Forged aluminum hubs mount to OE spindles

**GEN 1** '67-'69

**GEN 2** '70-'81

**GEN 3** '82-'92

*\*Special Order options for GEN 3 cars*

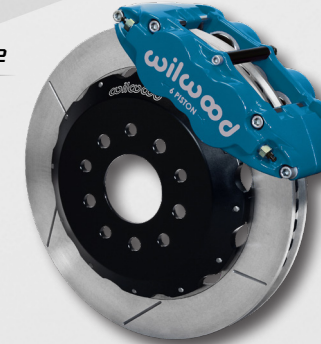


### SUPERLITE 6 FRONT BRAKES W/HAT

Two-piece rotor assemblies use aluminum hats to mount big brake rotors to the OE hubs on GEN 4 model customs and dual-sport street machines.

- Superlite 6 aluminum six piston calipers
- Options for 12.88" to 14.00" rotors
- Retains ABS and uses OE master cylinder

**GEN 4** '93-'02



### SUPERLITE 4R REAR BRAKES

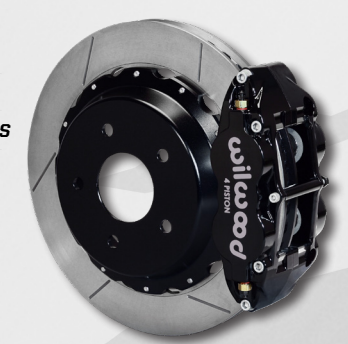
Complement your front brake upgrade with matched style and performance using these rear big brake kits with options for the street and dedicated track cars.

- Superlite 4R or 4R/ST four piston calipers
- Choice of 12.88" or 14.00" rotors
- Street kits retain the OE parking brakes

**GEN 4** '98-'02

**GEN 5** '10-'15

**GEN 6** '16-'19 SS



### PRO SERIES FDL/DLP REAR BRAKES

Convert your rear stock axle from drums to discs with four piston calipers and an internal parking brake on all types of high-performance street or show customs.

- Forged DynaPro LP or Dynalite calipers
- Choice of 11.00" or 12.19" diameter rotors
- No modifications to the OE rear axles

**GEN 1** '67-'69

**GEN 2** '70-'81

**GEN 4** '93-'97



### DRAG RACE BRAKE KITS

Wilwood drag race kits deliver high-response braking, emphasizing low drag, lightweight, and durability for race cars using OE spindles and popular rear axles.

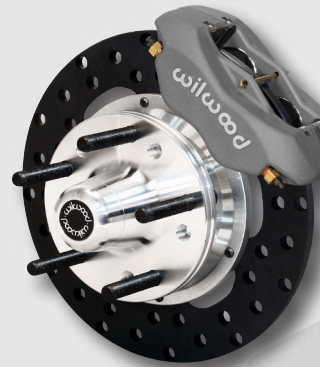
- Two or four piston single and dual-caliper kits
- Vented iron, LW drilled steel or SAS rotors
- Options for floating rotors on most kits

**GEN 1** '67-'69

**GEN 2** '70-'81

**GEN 3** '82-'92

**GEN 4** '98-'02



### SUPERLITE 6R FRONT BRAKES

Big rotors, six piston calipers, and forged aluminum hubs combine to deliver big brake performance for show customs and dual-sport street machines.

- Superlite 6R forged aluminum calipers
- Options for 12.88" to 14.00" diameter rotors
- Engineered for use with the factory spindles

**GEN 1** '67-'69

**GEN 2** '70-'81

**GEN 3** '82-'92



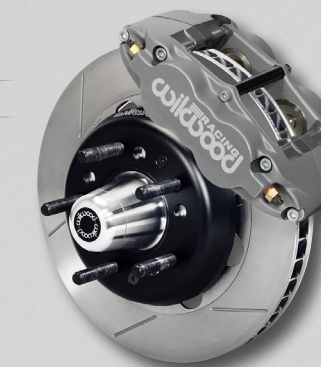
### SUPERLITE 4R/ST ROAD RACE BRAKES

Superlite 4R/ST road race kits deliver championship performance and unyielding durability in all levels of club and professional motorsports competition.

- SL4R/ST calipers with Thermlock® pistons
- Spec37 alloy directional vane rotors
- American Sedan, CMC, AI, AIX compliant

**GEN 3** '82-'92

**GEN 4** '98-'02



### AEROLITE 6R FRONT BRAKES

Large calipers and rotors create tremendous stopping power in big style for all types of show, custom and dual-sport street and track applications.

- Aerolite 6R six piston calipers
- Options for 14.00" to 15.00" diameter rotors
- Autocross and track options available

**GEN 1** '67-'69

**GEN 5** '10-'15

**GEN 6** '16-'17

