

## XRZ SPRINT 46 TOOTH SPLINED HUB AND ROTOR ADAPTER KITS FOR DYNAMIC MOUNTED ROTORS

Wilwood has engineered a new 46-tooth axle spline and rotor mounting system to improve stiffness and simplify the assembly/disassembly process, saving the splines from wear and tear.

Added stiffness starts with a new five-bolt rotor plate to hub axle spline clamp using a larger diameter. This reduces the overall dimension of the rotor adapter plate, allowing it to be thicker, stiffer,

and adding useful life. The rotor adapter plate mounts outboard of the axle clamp enabling it to be removed easily, leaving the axle clamp in place.

Rotor adapter plates are available for floating T-nut or Wilwood's **Lug-Drive** snap ring mount configurations. Hub with splined axle clamp is a precise fit for DMI and Winters 46 spline axles.



**XRZ Splined Hub Kit,  
Lug-Drive Rotor Adapter**  
P/N [270-17650](#)



**XRZ Sprint Hub Axle Clamp  
Spline Saver, 46 Tooth**  
P/N [270-17657](#)



**XRZ Splined Hub Kit,  
8x7.00" Rotor Adapter**  
P/N [270-17649](#)

### KITS FEATURE:

- First **Lug-Drive**/Hub combination of its kind where rotor mounts to plate without bolts
- Smaller OD to ID rotor plates are wider providing strength, stiffness, and longevity
- Simplified rotor and rotor plate changes without removing the axle spline saver clamp

### SPRINT HUB AXLE CLAMP: 46 TOOTH

- Designed for outboard rotor plate mounting using new 5 x 4.875" rotor adapters; Fits DMI and Winters 46 spline axles
- Allows for rotor plates to be removed while keeping hub locked in place, saving wear-and-tear on the axle and simplifying rotor changes

### HUB KIT: Lug-Drive, Uses 7.18" Snap Ring

- Sprint Lug-Drive rotor adapter is the first of a new system using no bolts to attach to rotor
- Attaches using 7.18" stainless steel snap ring and replaceable float clips (available separately)
- Designed for rotor #160-16923, 6T Slotted, 40 straight vane, iron alloy (11.75" x 0.81" x 7.18" lug mount) and a radial mount caliper

### HUB KIT: 8x7.00" Rotor Adapter

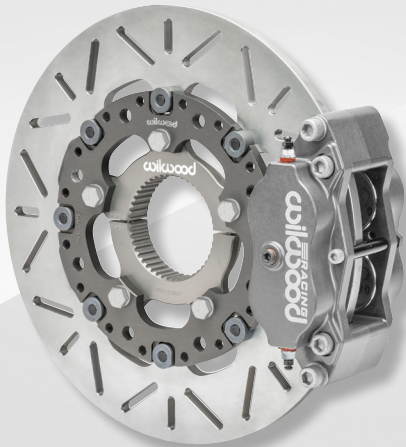
- Sprint rotor adapter for dynamic mounting with 8 x 7.00" bolt pattern, 5 x 4.875" bolt circle rotors (rotors available separately)
- Sprint inboard hub assembly axle clamp for 46 tooth splined axle
- T-nut rotor mounting bolt kits sold separately (#230-14845)



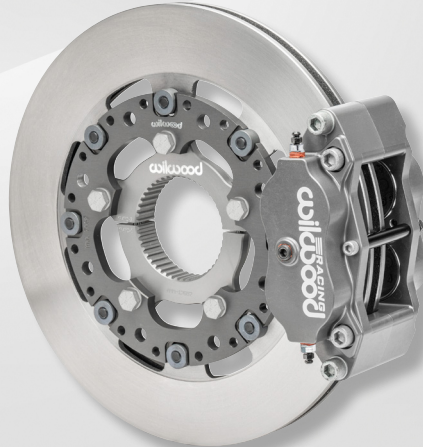
### SPRINT INBOARD RADIAL MOUNT CALIPERS, XRZ 46-SPLINED HUB AXLE CLAMP KITS

**DYNALITE XRZ  
SPLINED HUB KIT  
11.75" SA ROTOR**  
[140-15345](#)

**SUPERLITE XRZ  
SPLINED HUB KIT  
12.19" GT SLOTTED**  
[140-17141](#)



**DYNALITE XRZ SPLINED HUB KIT  
12.00" TITANIUM P/N [140-15346](#)**



**DYNALITE XRZ SPLINED HUB KIT  
12.19" PLAIN FACE P/N [140-15347](#)**



**SUPERLITE-ST XRZ SPLINED HUB KIT  
12.19" PLAIN FACE P/N [140-15815](#)**

ORDERING INFO: PH: 805.388.1188 • FAX: 805.388.4938 • [wilwood.com](http://wilwood.com) • [info@wilwood.com](mailto:info@wilwood.com)

PART No.	DESCRIPTION	CALIPER TYPE	ROTOR TYPE	ROTOR SIZE
<a href="#">140-15345</a>	Kit, Sprint Inboard XRZ Splined Hub Clamp, 8x7.00" Rotor Adapter	Dynalite 4 Piston, Side Inlet	GT Slotted, Super Alloy 32 Vane	11.75" x 0.81"
<a href="#">140-15346</a>	Kit, Sprint Inboard XRZ Splined Hub Clamp, 8x7.00" Rotor Adapter	Dynalite 4 Piston, Side Inlet	SA Titanium Slotted	12.00" x 0.36"
<a href="#">140-15347</a>	Kit, Sprint Inboard XRZ Splined Hub Clamp, 8x7.00" Rotor Adapter	Dynalite 4 Piston, Side Inlet	Ultralite 32 Curved Vane, Plain Face	12.19" x 0.81"
<a href="#">140-15815</a>	Kit, Sprint Inboard XRZ Splined Hub Clamp, 8x7.00" Rotor Adapter	Superlite-ST Thermlock, 4 Piston	Ultralite 32 Curved Vane, Plain Face	12.19" x 1.25"
<a href="#">140-17141</a>	Kit, Sprint Inboard XRZ Splined Hub Clamp, 8x7.00" Rotor Adapter	Superlite, 4 Piston	<b>Spec37</b> 36 Curved Vane, Plain Face	12.19" x 0.81"
<a href="#">270-17649</a>	XRZ Splined Hub Kit with 8 x 7.00" Rotor Adapter			
<a href="#">270-17650</a>	XRZ Splined Hub Kit with Lug-Drive Rotor Adapter (7.18" snap ring & wear plates sold separately). Use Rotor #160-16923, GT Slotted, 40 Vane, 11.75" x 0.81"			
<a href="#">270-17657</a>	XRZ Sprint Hub Axle Clamp, Inboard 46 Tooth (rotor adapter mounting bolts sold separately)			
<a href="#">310-11775</a>	7.18" Stainless Steel Snap Ring for Lug-Drive Rotor Adapter.	<a href="#">300-11931</a> Lug-Drive Wear Plate Float Clips (each)		
<a href="#">230-14845</a>	T-Nut Bolt Kit (8 pk, 5/16-24 hex head cap screw)			
<a href="#">230-17648</a>	Adapter Mounting Bolt Kit to Hub Axle Clamp (5 pk)			