

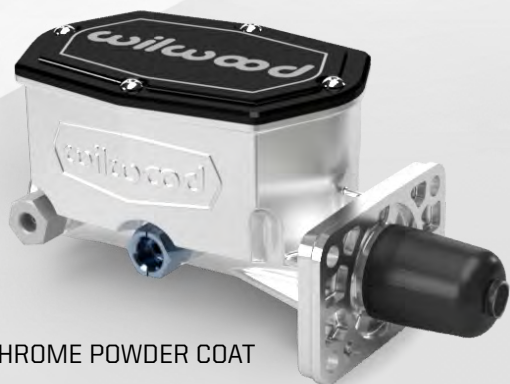
MOPAR 4 BOLT FLANGE MASTER CYLINDERS

Wilwood's Mopar Compact Tandem Master Cylinder combines performance, style, and a four bolt flange for direct mounting on many Mopar cars. Three bore size options provide the correct volume and pressure output for optimal brake performance with Wilwood disc brake kits, OE style disc brakes, and retrofits of pre-1967 drum brake cars to the safety of dual circuits.



BLACK E-COAT

15/16" and 1.00" Bore
(includes push rod)



CHROME POWDER COAT

1.00" and 1-1/8" Bore
(no push rod, for power brakes)

FEATURES:

- Four bolt flange designed for Dodge and Plymouth A, B, and E-body cars of the muscle car era
- 15/16" or 1.00" bore with pushrod for manual brakes and 1.00" or 1-1/8" for power brakes to tune pedal effort and feel
- Lightweight, high-strength die-cast aluminum master cylinder weighs only 3.25 lbs
- Compact size and shape: 6.55" long from flange, 4.08" wide, and 3.03" tall from pushrod centerline
- Fully captured bellows lid gasket isolates brake fluid from moisture and seals out all debris
- Fittings included to accommodate 3/8"-24, 1/2"-20, and 9/16"-20 IF brake lines
- Available in gloss black E-coat or chrome powder coat

ORDERING INFO: PH: 805.388.1188 • FAX: 805.388.4938 • wilwood.com • info@wilwood.com

PART NUMBER	DESCRIPTION	BORE SIZE	FINISH
260-16791-BK	Compact Tandem M/C with Mopar 4 Bolt Flange with Pushrod	15/16" Bore	Black E-Coat
260-16791-P	Compact Tandem M/C with Mopar 4 Bolt Flange with Pushrod	15/16" Bore	Chrome Powder Coat
260-16854-BK	Compact Tandem M/C with Mopar 4 Bolt Flange with Pushrod	1.00" Bore	Black E-Coat
260-16854-P	Compact Tandem M/C with Mopar 4 Bolt Flange with Pushrod	1.00" Bore	Chrome Powder Coat
260-16792-BK	Compact Tandem M/C with Mopar 4 Bolt Flange	1.00" Bore	Black E-Coat
260-16792-P	Compact Tandem M/C with Mopar 4 Bolt Flange	1.00" Bore	Chrome Powder Coat
260-16793-BK	Compact Tandem M/C with Mopar 4 Bolt Flange	1-1/8" Bore	Black E-Coat
260-16793-P	Compact Tandem M/C with Mopar 4 Bolt Flange	1-1/8" Bore	Chrome Powder Coat

MOPAR 4 BOLT FLANGE MASTER CYLINDERS



Mopar 4 Bolt Flange Compact Tandem Master Cylinder Kits - Complete kits include an adjustable combination proportioning valve, pre-bent lines, mounting bracket, and brake light switch.

ORDERING INFO: PH: 805.388.1188 • FAX: 805.388.4938 • wilwood.com • info@wilwood.com

PART NUMBER	DESCRIPTION	BORE SIZE	FINISH
261-16796-BK	Mopar Compact Tandem M/C Kit with Combination Valve and Pushrod	15/16" Bore	Black E-Coat
261-16796-P	Mopar Compact Tandem M/C Kit with Combination Valve and Pushrod	15/16" Bore	Chrome Powder Coat
261-17319-BK	Mopar Compact Tandem M/C Kit with Combination Valve and Pushrod	1.00" Bore	Black E-Coat
261-17319-P	Mopar Compact Tandem M/C Kit with Combination Valve and Pushrod	1.00" Bore	Chrome Powder Coat
261-16797-BK	Mopar Compact Tandem M/C Kit with Combination Valve	1.00" Bore	Black E-Coat
261-16797-P	Mopar Compact Tandem M/C Kit with Combination Valve	1.00" Bore	Chrome Powder Coat
261-16798-BK	Mopar Compact Tandem M/C Kit with Combination Valve	1-1/8" Bore	Black E-Coat
261-16798-P	Mopar Compact Tandem M/C Kit with Combination Valve	1-1/8" Bore	Chrome Powder Coat