



CHRYSLER/DODGE/PLYMOUTH C-BODY • 1965 - 1972 DYNALITE, DYNAPRO AND SUPERLITE FRONT BRAKE KITS

Forged Dynalite, DynaPro 6 and Superlite 6R front brake kits for the 1965-1972 Chrysler/Dodge/Plymouth (CDP) C-Body combines cutting-edge technology with high-tech styling to deliver track proven endurance and big brake performance for the street, track or show.



Kit Features

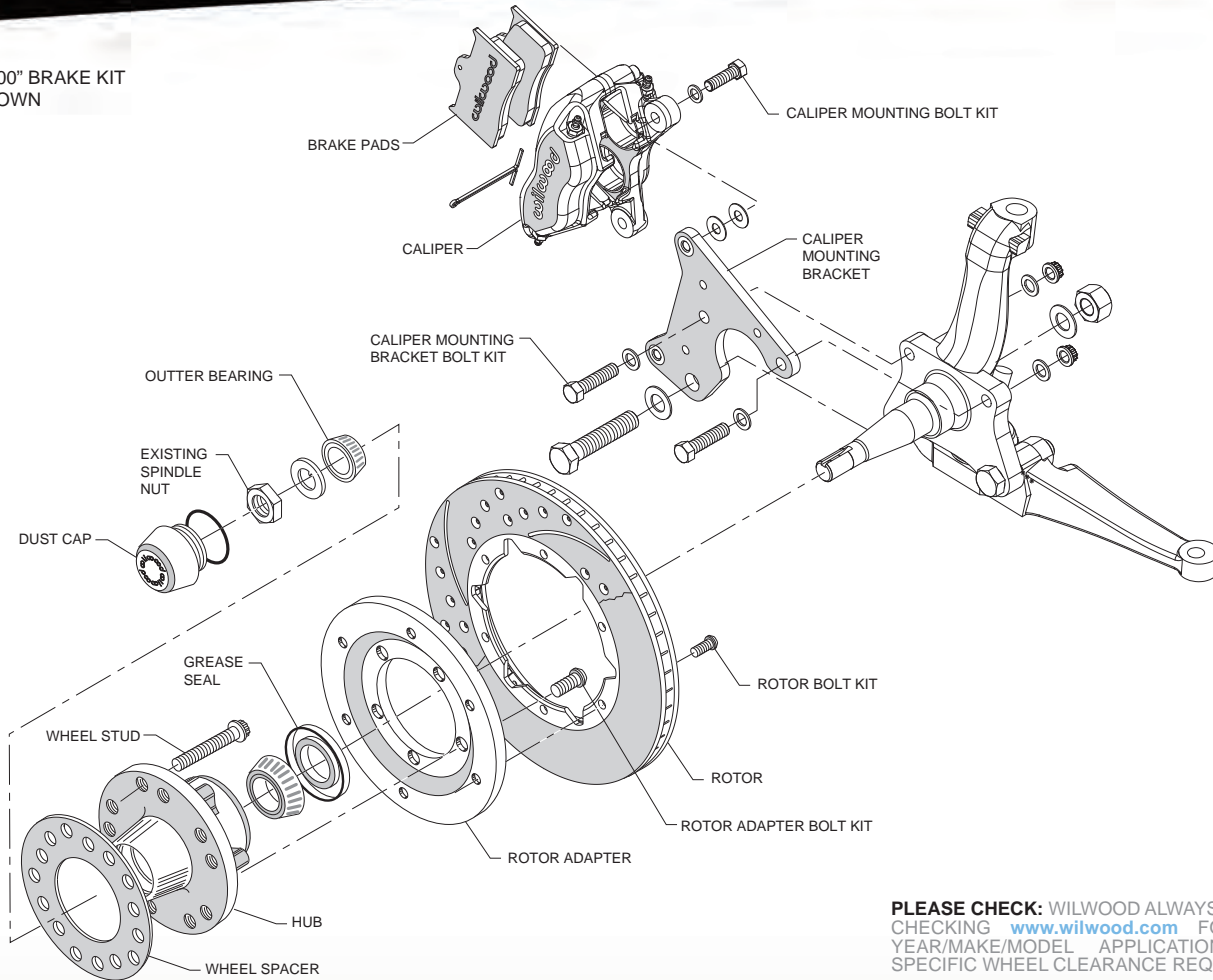


- Select either a forged Dynalite four piston caliper, or a DynaPro or Superlite six piston caliper
- Dynalite calipers are available black anodized or red powder coat; DynaPro and Superlite calipers available either gloss black or red powder coat
- 11.00" or 12.19" diameter vented iron ULHP smooth face or SRP drilled and slotted rotors are available with the Dynalite or DynaPro caliper
- 12.88" or 14.00" diameter GT slotted or SRP drilled and slotted **Spec37** alloy directional vane rotors are available with Superlite calipers
- BP-10 compound composite metallic *SmartPads*
- Fully bolt-on kits complete with brackets, hardware and detailed installation instructions
- Fits original equipment drum brake spindles

Notes:

Go to www.wilwood.com for complete year/make/model application data and specific wheel clearance requirements. Flexline kits are required for installation and must be ordered separately by specific vehicle make, model, and year.

DYNALITE 11.00" BRAKE KIT
DRAWING SHOWN



PLEASE CHECK: WILWOOD ALWAYS RECOMMENDS CHECKING www.wilwood.com FOR COMPLETE YEAR/MAKE/MODEL APPLICATION DATA AND SPECIFIC WHEEL CLEARANCE REQUIREMENTS.

ORDERING INFORMATION: Front Brake Kits for 1965-1972 CDP C-Body

PART NUMBER	DESCRIPTION	CALIPER FINISH
140-15196	Dynalite Calipers, 11.00" ULHP Plain Face Rotors	Black Anodize
140-15196-D	Dynalite Calipers, 11.00" SRP Drilled and Slotted Rotors	Black Anodize
140-15196-R	Dynalite Calipers, 11.00" ULHP Plain Face Rotors	Red Powder Coat
140-15196-DR	Dynalite Calipers, 11.00" SRP Drilled and Slotted Rotors	Red Powder Coat
140-15197	Dynalite Calipers, 12.19" ULHP Plain Face Rotors	Black Anodize
140-15197-D	Dynalite Calipers, 12.19" SRP Drilled and Slotted Rotors	Black Anodize
140-15197-R	Dynalite Calipers, 12.19" ULHP Plain Face Rotors	Red Powder Coat
140-15197-DR	Dynalite Calipers, 12.19" SRP Drilled and Slotted Rotors	Red Powder Coat
140-15198	DynaPro 6 Calipers, 12.19" ULHP Plain Face Rotors	Black Powder Coat
140-15198-D	DynaPro 6 Calipers, 12.19" SRP Drilled and Slotted Rotors	Black Powder Coat
140-15198-R	DynaPro 6 Calipers, 12.19" ULHP Plain Face Rotors	Red Powder Coat
140-15198-DR	DynaPro 6 Calipers, 12.19" SRP Drilled and Slotted Rotors	Red Powder Coat
140-15199	Superlite 6R Calipers, 12.88" Spec37 GT Competition Series Rotors	Black Powder Coat
140-15199-D	Superlite 6R Calipers, 12.88" Spec37 SRP Drilled and Slotted Rotors	Black Powder Coat
140-15199-R	Superlite 6R Calipers, 12.88" Spec37 GT Competition Series Rotors	Red Powder Coat
140-15199-DR	Superlite 6R Calipers, 12.88" Spec37 SRP Drilled and Slotted Rotors	Red Powder Coat
140-15200	Superlite 6R Calipers, 14.00" Spec37 GT Competition Series Rotors	Black Powder Coat
140-15200-D	Superlite 6R Calipers, 14.00" Spec37 SRP Drilled and Slotted Rotors	Black Powder Coat
140-15200-R	Superlite 6R Calipers, 14.00" Spec37 GT Competition Series Rotors	Red Powder Coat
140-15200-DR	Superlite 6R Calipers, 14.00" Spec37 SRP Drilled and Slotted Rotors	Red Powder Coat