

SHORT TRACK PISTON ASSEMBLY

Heat Management By



MAINTENANCE INSTRUCTIONS:

- The accompanying construction diagram is provided for informational/reference only.
- Cleaning should be performed dry, using Scotch Bright or similar material.
- DO NOT** submerge or permit liquids to come in contact with piston.
- Check torque on bolts after use. Re-torque to 60 in. lbs.
- DO NOT** disassemble piston. Disassembly requires the replacement of all insulation materials.
- Please contact Wilwood Engineering if service is required.

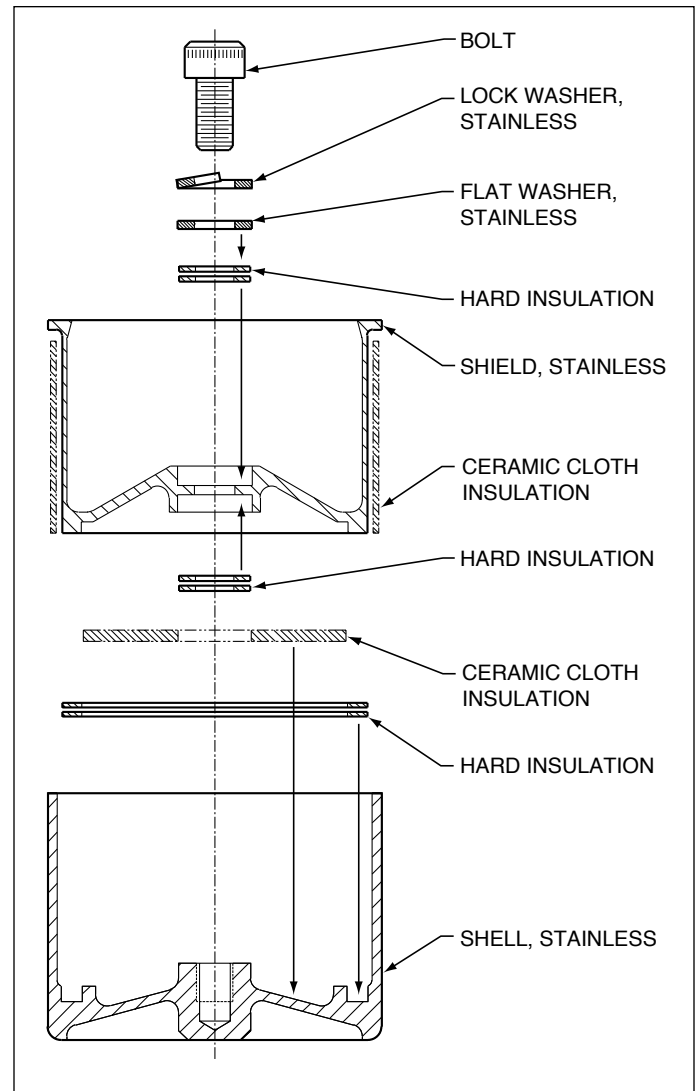
Ordering Information:

Designed specifically to fit Wilwood GT and GT 6000 Calipers.

P/N: 200-3977 - 1.75 Diameter

P/N: 200-3980 - 1.88 Diameter

Contact your local Wilwood dealer



CONSTRUCTION DIAGRAM