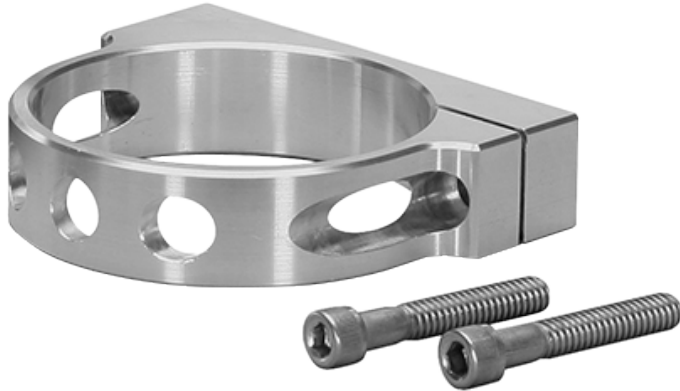


SINGLE RESERVOIR MOUNTING BRACKETS

INFORMATION & SPECIFICATION SHEET

Bracket Kit Part Numbers

250-16821



P/N 250-16821

Billet finish aluminum single mount bracket with screws for remote mount 4 ounce fluid reservoir

250-16822



P/N 250-16822

Anodized aluminum single mount bracket with screws for remote mount 4 ounce fluid reservoir

General Information

•**NOTE: If replacing the stock master cylinder, additional brake line plumbing may be required.**

•Part numbers 250-16821 (billet finish) and 250-16822 (anodized finish) are aluminum reservoir mounting brackets with screws included, designed specifically to mount Wilwood's billet aluminum 4 ounce fluid reservoirs remotely, away from the master cylinder body.

•Wilwood also offers a remote single reservoir kit containing a 4 ounce aluminum reservoir with cap and fitting, and a reservoir mounting bracket with mounting screws. Order p/n 260-12697.

Fluid Reservoirs for Mounting Brackets

Part No.	Description
260-12696	Remote Mount, Billet Finish, 4 oz. Reservoir
260-16390	Remote Mount, Billet Finish, 4 oz. Lightweight Reservoir
260-16392	Remote Mount, Anodized Finish, 4 oz. Lightweight Reservoir

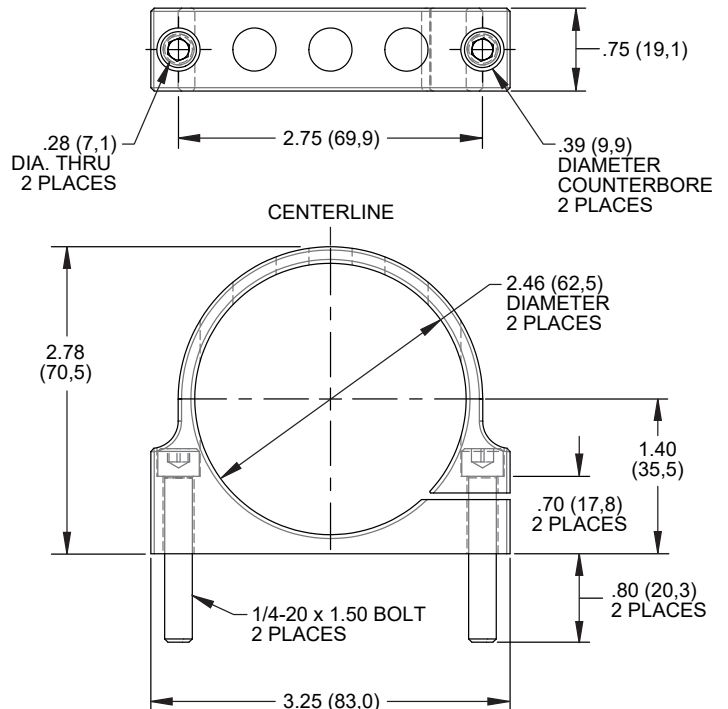


Figure 1.
P/Ns 250-16821 & 250-16822
Single Reservoir Mounting Bracket Dimensions

WARNING

THIS COMPONENT IS DESIGNED FOR USE IN CUSTOM BRAKE SYSTEMS ON PERFORMANCE, RACING, AND OTHER SPECIAL PURPOSE BUILT OFF-ROAD VEHICLES. IT IS NOT INTENDED AS A DIRECT REPLACEMENT FOR ANY OEM APPLICATION.

Plumbing & Precautions

- Use of reinforced flexible lines should be limited to the connection between the remote fluid reservoir and master cylinder, and between the fixed chassis and the moving suspension. All other lines along the fixed chassis should be hard steel lines.
- On four wheel disc brake applications, where the fluid reservoir is mounted higher than the caliper bleed screws, a residual pressure valve is usually not required.
- Disc brake applications where the fluid reservoir is mounted lower than the caliper bleed screws may require a 2-pound residual pressure valve. This can prevent fluid drain back and excessive pedal travel on initial engagement.
- Use an adjustable proportioning valve to set the front to rear brake bias.

Associated Components

Part No.	Description	Part No.	Description
250-12701	Bracket, Single 4 oz. Reservoir Mount, Billet	260-11179	Knob Style Combination Proportioning Valve
220-13130	11/16-20 to -3 AN, M/C to Flexline Adapter Fitting	290-0632	Wilwood Hi-Temp 570 DOT 3 Fluid
260-1874	2 PSI Residual Pressure Valve	290-6209	Wilwood EXP 600 Plus Super Hi-Temp Fluid
260-1876	10 PSI Residual Pressure Valve	290-16353	Wilwood XR Race-Only Extreme Hi-Temp Fluid
260-8419	Knob Adjustable Proportioning Valve	330-12645	Master Cylinder Reservoir Cap with Electronic Fluid Float Sensor for 4 oz. Reservoir
260-8420	Lever Adjustable Proportioning Valve		

Brake Testing

WARNING • DO NOT DRIVE ON UNTESTED BRAKES BRAKES MUST BE TESTED AFTER INSTALLATION OR MAINTENANCE MINIMUM TEST PROCEDURE

- Make sure pedal is firm: Hold firm pressure on pedal for several minutes, it should remain in position without sinking. If pedal sinks toward floor, check system for fluid leaks. DO NOT drive vehicle if pedal does not stay firm or can be pushed to the floor with normal pressure.
- At very low speed (2-5 mph) apply brakes hard several times while turning steering from full left to full right, repeat several times. Remove the wheels and check that components are not touching, rubbing, or leaking.
- Carefully examine all brake components, brake lines, and fittings for leaks and interference.
- Make sure there is no interference with wheels or suspension components.
- Drive vehicle at low speed (15-20 mph) making moderate and hard stops. Brakes should feel normal and positive. Again check for leaks and interference.
- Always test vehicle in a safe place where there is no danger to (or from) other people or vehicles.
- Always wear seat belts and make use of all safety equipment.

WARNING

IT IS THE RESPONSIBILITY OF THE PERSON INSTALLING ANY BRAKE COMPONENT OR KIT TO DETERMINE THE SUITABILITY OF THE COMPONENT OR KIT FOR THAT PARTICULAR APPLICATION. IF YOU ARE NOT SURE HOW TO SAFELY USE THIS BRAKE COMPONENT OR KIT, YOU SHOULD NOT INSTALL OR USE IT. DO NOT ASSUME ANYTHING. IMPROPERLY INSTALLED OR MAINTAINED BRAKES ARE DANGEROUS. IF YOU ARE NOT SURE, GET HELP OR RETURN THE PRODUCT. YOU MAY OBTAIN ADDITIONAL INFORMATION AND TECHNICAL SUPPORT BY CALLING WILWOOD AT (805) 388-1188, OR VISIT OUR WEB SITE AT WWW.WILWOOD.COM. USE OF WILWOOD TECHNICAL SUPPORT DOES NOT GUARANTEE PROPER INSTALLATION. YOU, OR THE PERSON WHO DOES THE INSTALLATION MUST KNOW HOW TO PROPERLY USE THIS PRODUCT. IT IS NOT POSSIBLE OVER THE PHONE TO UNDERSTAND OR FORESEE ALL THE ISSUES THAT MIGHT ARISE IN YOUR INSTALLATION.

RACING EQUIPMENT AND BRAKES MUST BE MAINTAINED AND SHOULD BE CHECKED REGULARLY FOR FATIGUE, DAMAGE, AND WEAR.